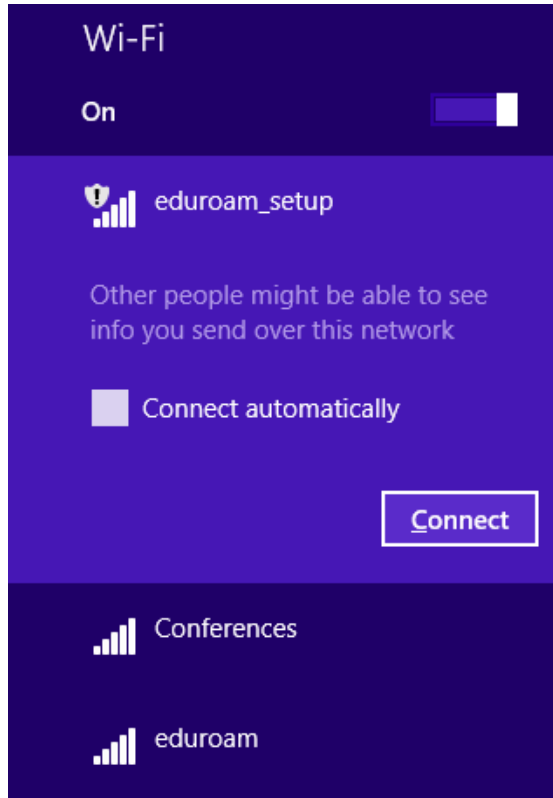
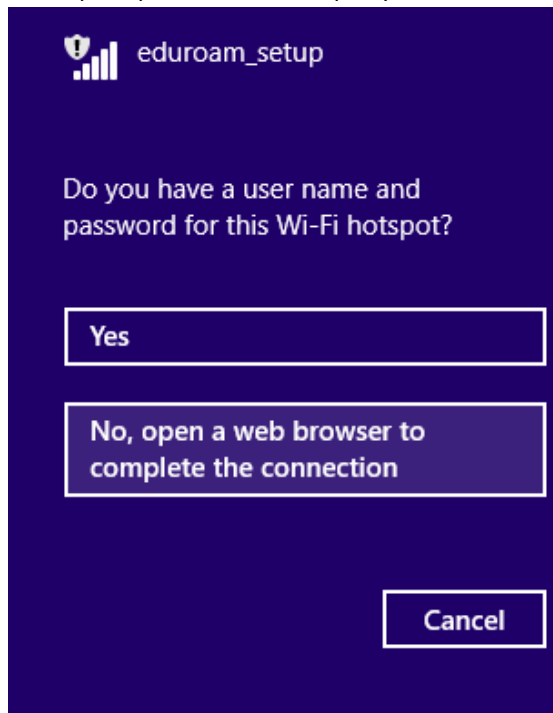

eduroam CONNECTION INSTRUCTIONS

WINDOWS 8.1

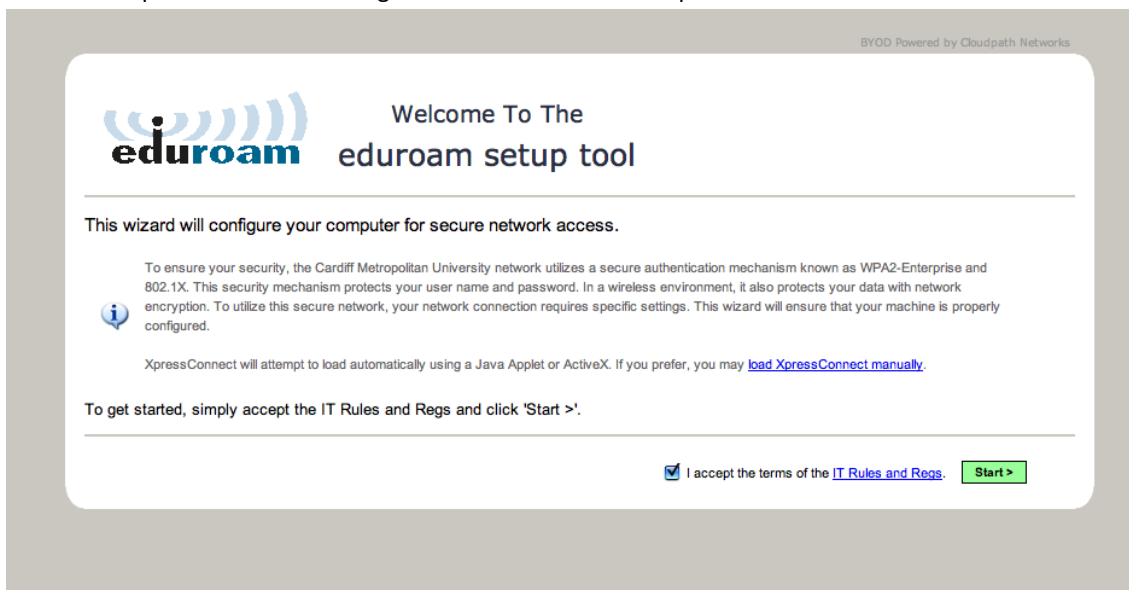
- Firstly, connect to the eduroam_setup wifi network



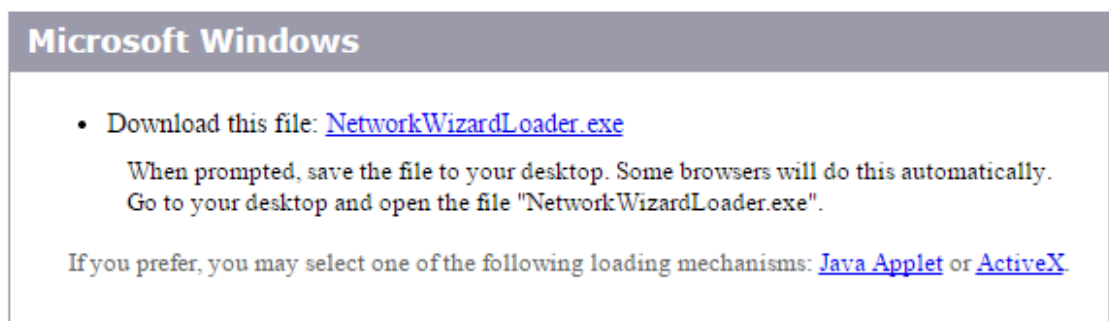
- When prompted, click No to open your web browser



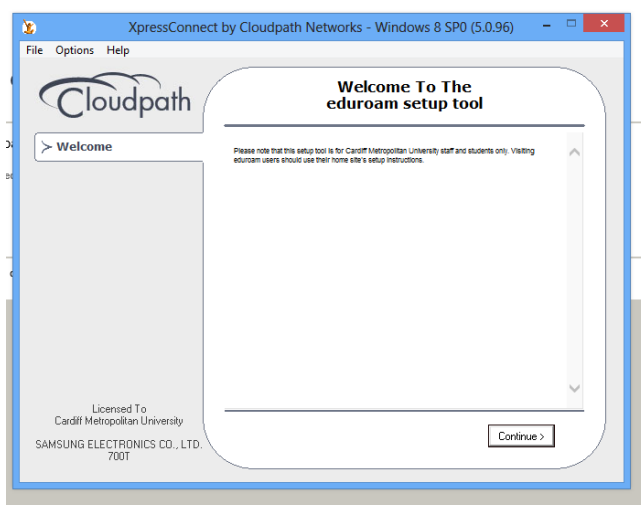
- Once connected, open your internet browser and you will be redirected to the Welcome screen. Click Start to accept the IT Rules and Regulations and continue setup.



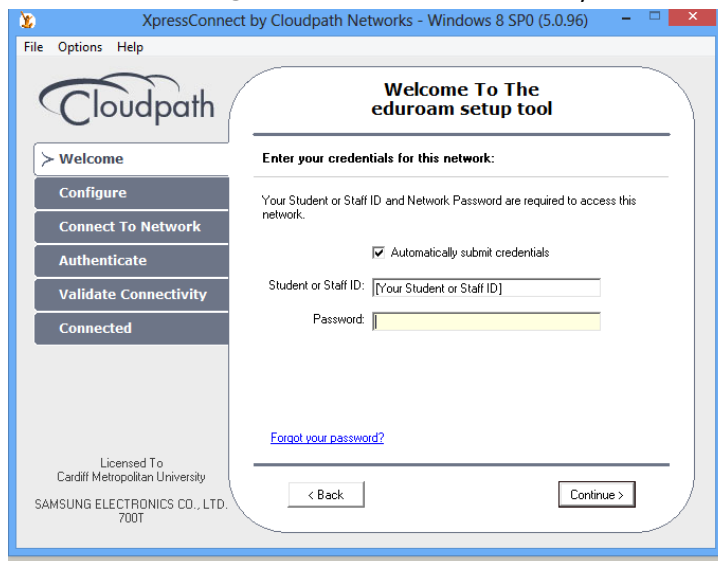
- Click to download the configuration tool.



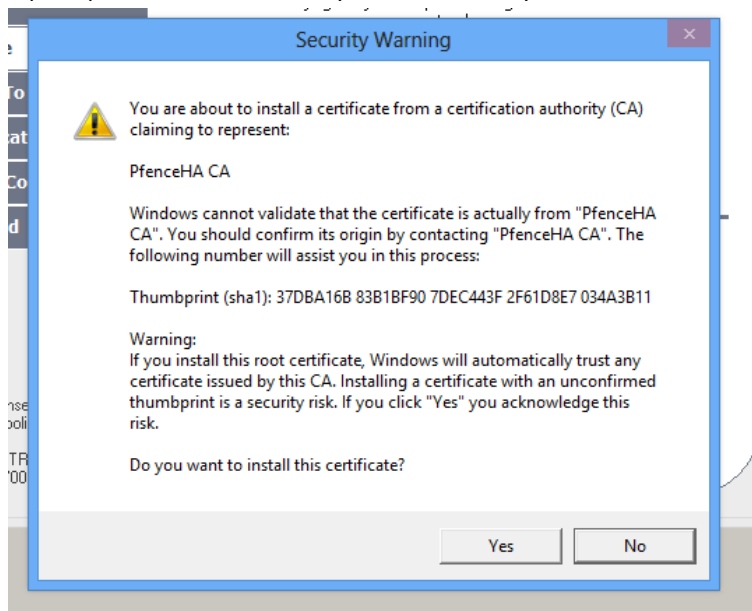
- Open the downloaded tool, if you get a message from Windows SmartScreen click Run anyway.
- When the setup tool has loaded you will see another welcome screen. Click Continue.



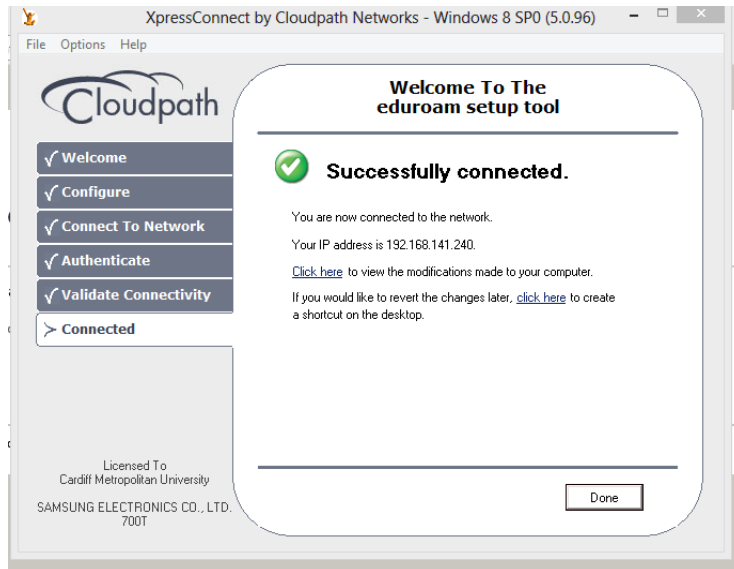
- Enter your Cardiff Met staff or student ID and network password in the boxes provided. You will see the user ID box add @cardiffmet.ac.uk to the end of your user ID. Click continue.



- If prompted to install a security certificate click yes.



- You will now be connected. Click Done to close the wizard.



If you have any difficulty running this setup tool then please contact the IT Helpdesk on extension 7000, or by emailing ithelpdesk@cardiffmet.ac.uk. IT advisors are also available at the Learning Centres to help you with any difficulties.